A woman with short dark hair and hoop earrings stands with her arms crossed, looking towards the camera. She is wearing a sleeveless, knee-length dress with a bold geometric pattern in blue, white, and dark blue. The dress has a high collar and a slit on the right side. She is standing on a surface with large, irregular geometric shapes in blue and white. The overall aesthetic is modern and architectural.

BLOQUES





DOLCE&GABBANA



PPQ



CASSIE BYRNES



LETA SOBIERAJSKI





CHRISTIAN SIRIANO



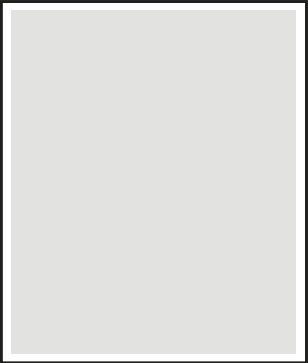
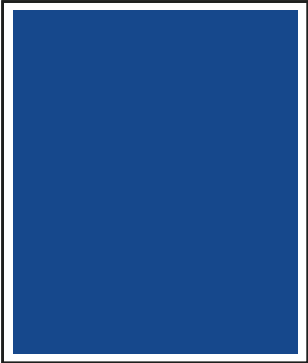
ISSEY MIYAKE

El AZUL KLEIN como protagonista, combinandose con la estampación en bloque para crear look modernos.



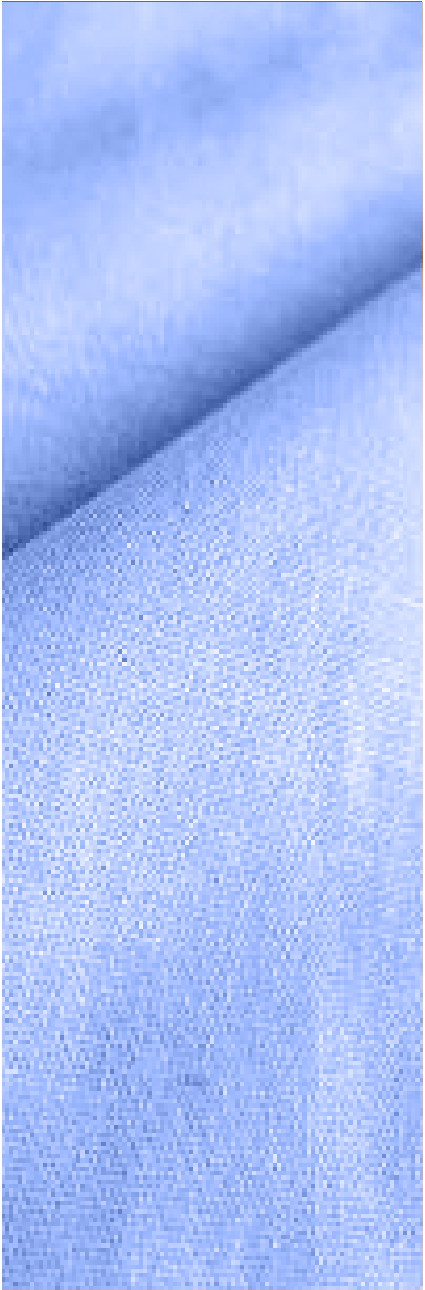
Y2K

# GAMA DE COLOR





# BASES DE ESTAMPACION



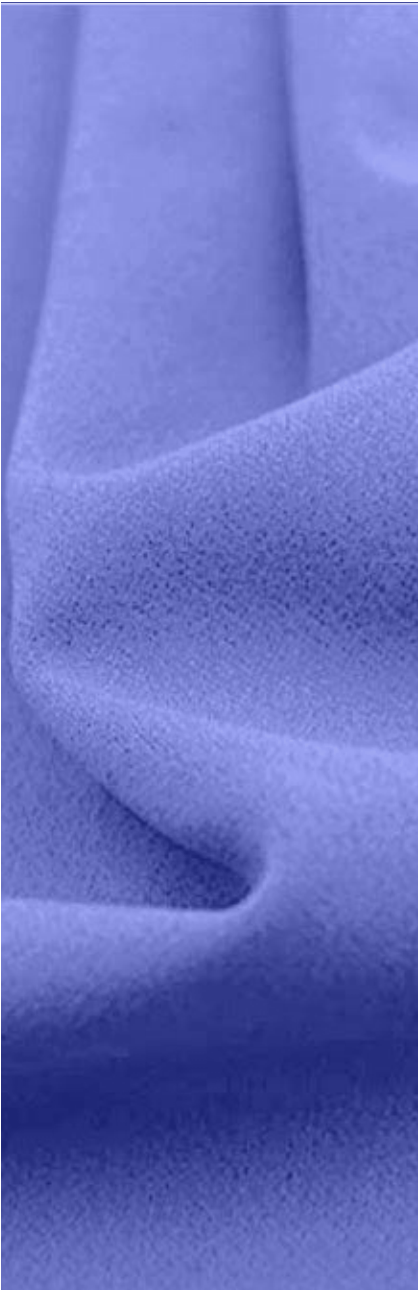
LINO



CHALIS SUPREMO

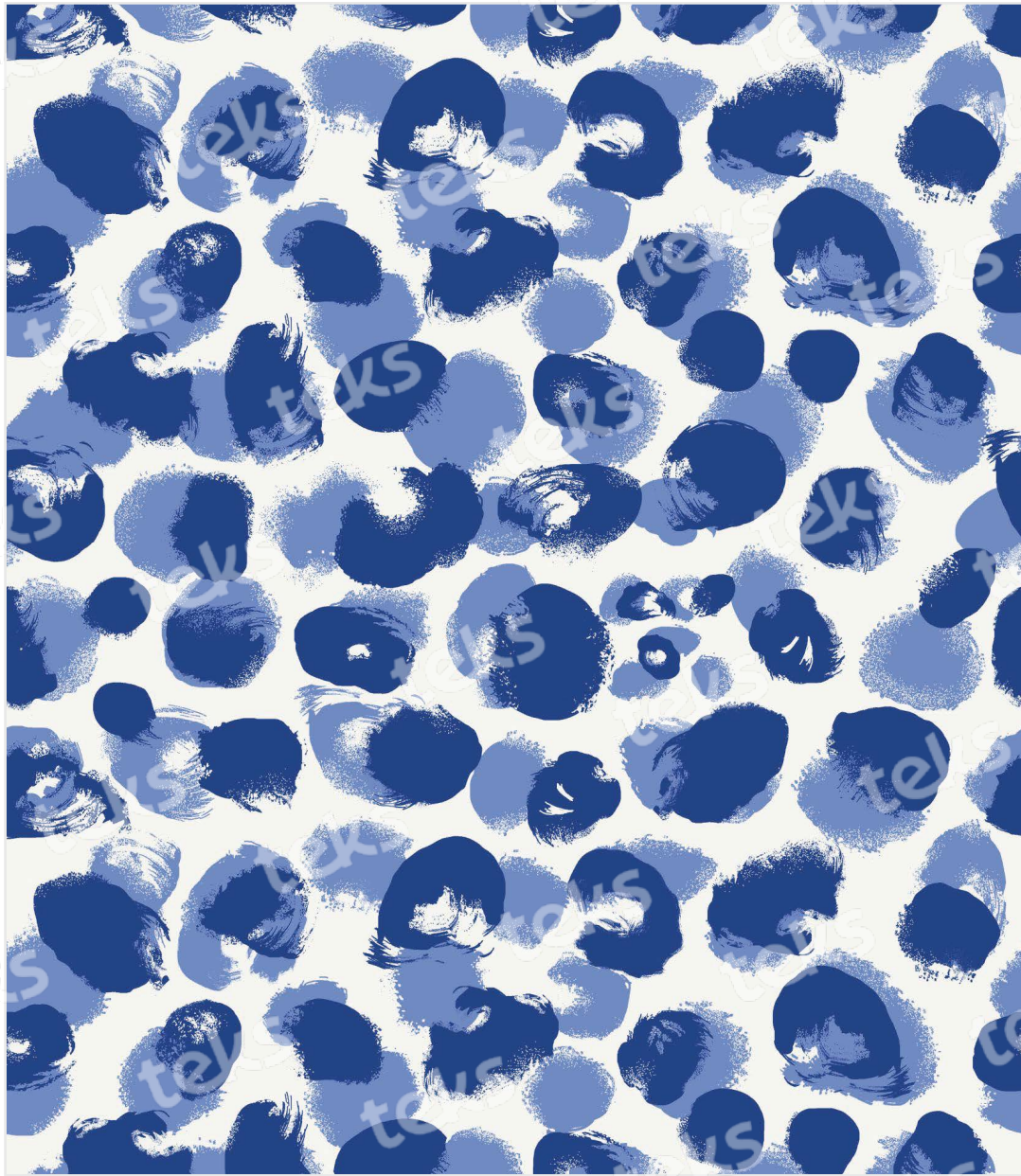


DESIA



KABU





REFERENCIA: CHAL KLEIN  
BASE: CHALIS SUPREMO





# BLOQUES MIX

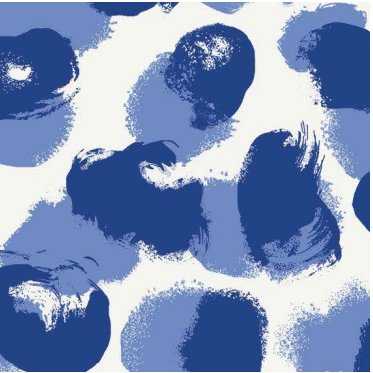


REFERENCIA: GENA MANCHI  
BASE: GENA ARMANI



# BLOQUES

RESUMEN DE COLECCION



BLOQUES MIX