



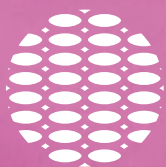
playateks

Catálogo
textil playa
2024

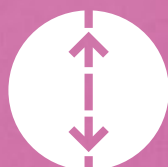


Pesadas Ny - Spa

Power



NYLON



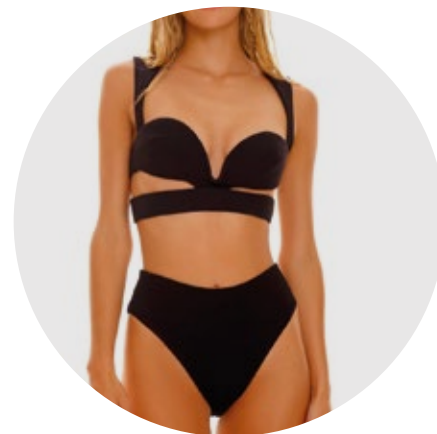
BI-STRETCH

Ancho: **1.50 m.** +/- 3%

Rendimiento: **3.0 m/k** +/- 7%

Composición: **Nylon 80%**
Spandex 20%

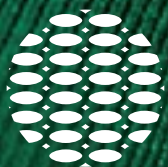
Ideal para: **Camisetas, tops**
y vestidos de baño



Gama de color:



Destellante



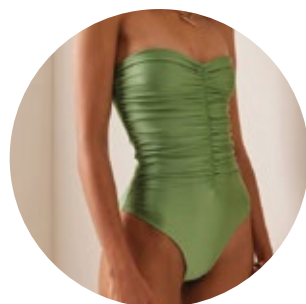
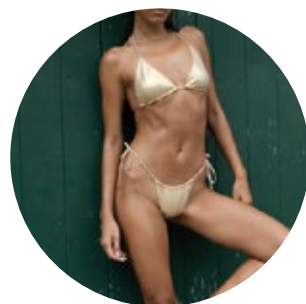
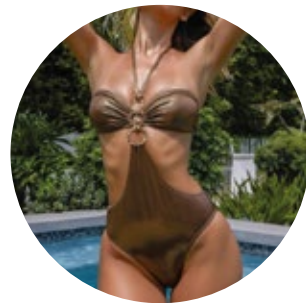
NYLON

Ancho: **1.50 m.** +/- 3%

Rendimiento: **3.4 m/k** +/- 7%

Composición: **Nylon 77%**
Spandex 23%

Ideal para: **Shorts, Tops y**
Vestidos de baño



Gama de color:



A woman with long, dark, wavy hair is shown in profile, looking down. She is wearing a bright green, one-piece swimsuit made of a 3D mesh material. She is adorned with several gold-colored bracelets and bangles on both wrists, and a large, ornate gold earring. Her hair is blowing in the wind, creating a sense of movement. The background is a plain, light gray.

Textura 3D

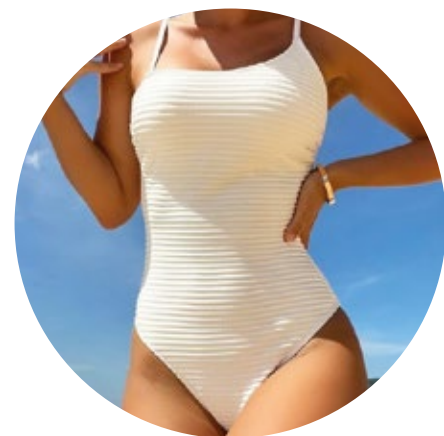
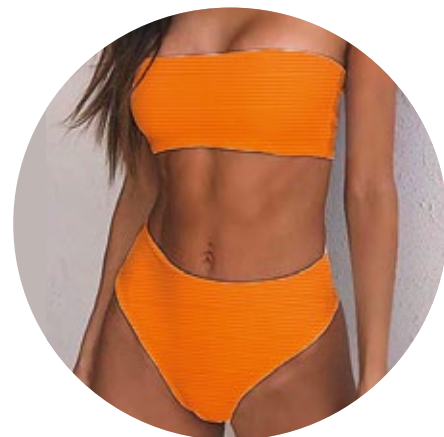
Solbeach

Ancho: 1.50 m. +/- 3%

Rendimiento: 3.0 m/k +/- 7%

Composición: **Poliéster 90%**
Spandex 10%

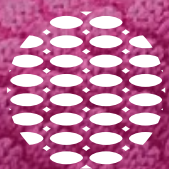
Ideal para: **ropa deportiva
femenina, trajes de baño,
tops, vestidos y ropa exterior
femenina.**



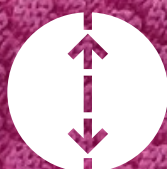
Gama de color:



Lemmon



NYLON



BI-STRETCH

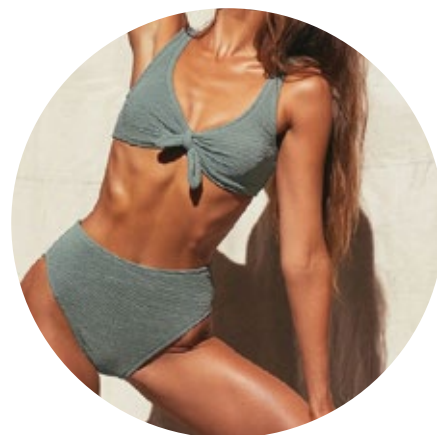
Ancho: **1.50 m.** +/- 3%

Rendimiento: **3.0 m/k** +/- 7%

Composición: **Nylon 92%**

Spandex 8%

Ideal para: **Camisetas, tops
vestidos de baño y leggings
internos**



Gama de color:



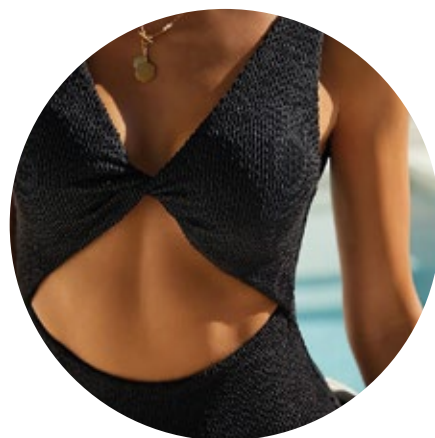
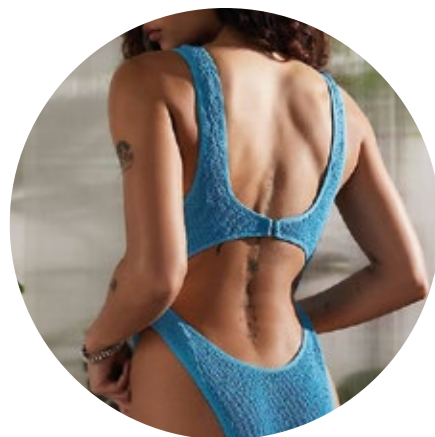
Mara

Ancho: **1.60 m. +/- 3%**

Rendimiento: **3.5 m/k +/- 7%**

Composición: **Nylon 86%**
Spandex 14%

Ideal para: **Vestidos de baño.**



Gama de color:



A woman with long, wavy brown hair is standing on a sandy beach. She is wearing a black, short-sleeved, button-down cardigan with a mesh or lace-like pattern over a black skirt with a similar pattern. She is also wearing a pearl necklace and a pearl bracelet on her left wrist. Her arms are raised behind her head. The background is a bright, overexposed beach scene with sand and water.

Mallas

Island

Ancho: **1.50 m.** +/- 3%

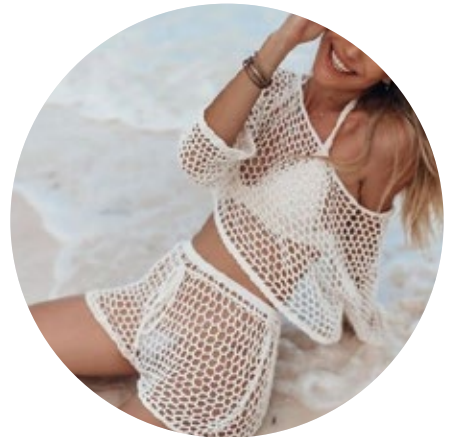
Rendimiento: **4.0 m/k** +/- 7%

Composición: **Poliéster 60%**

Algodón 32%

Spandex 8%

Ideal para: **Camisas,**
Pantalones, Faldas y Vestidos.



Gama de color:



Valianas

Ancho: **1.50 m. +/- 3%**

Rendimiento: **6.5 m/k +/- 7%**

Composición: **Poliéster 94%**
Spandex 6%

Ideal para: **Salidas de baño.**



Gama de color:





Plano Baño

Urenos Repel



Antifluído



Lavado fácil

Ancho: **1.45 m. +/- 3%**

Peso: **85 Gr/m2 +/- 7%**

Composición: **Poliéster 100%**

Ideal para: **Bermudas de baño**



Gama de color:



Stefanos Repel



Antifluído



Bi-Stretch



Lavado fácil

Ancho: **1.50 m. +/- 3%**

Peso: **125 Gr/m2 +/- 7%**

Composición: **Poliéster 86%**
Spandex 14%

Ideal para: **Bermudas de baño**



Gama de color:

